



Genuine THCA

Chatsworth, CA 91311

info@genuineTHCA.com

Sample 771-070224-006

Watermelon Hemp Preroll

Batch/Lot # WM7124

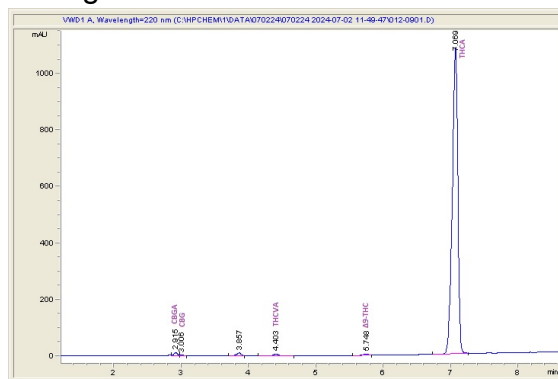
Sample Submitted: 06-30-2025; Report Date: 07-02-2025

Watermelon Hemp Preroll

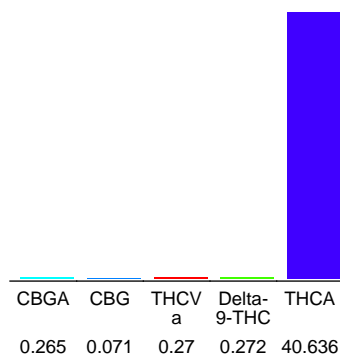
Batch/Lot # WM7124

Plant Material: Infused Flower

Chromatogram



Cannabinoid Profile



Cannabinoid Profile by HPLC

0.27%

Delta-9-THC

0.00%

CBD

41.51%

Total Cannabinoids

| Cannabinoid | % wt | mg/g |
|-----------------------------|--------------|---------------|
| CBGA | 0.265 | 2.65 |
| CBG | 0.071 | 0.71 |
| THCVa | 0.27 | 2.7 |
| Delta-9-THC | 0.272 | 2.72 |
| THCA | 40.64 | 406.36 |
| Total Cannabinoids | 41.51 | 415.1 |
| Calculated Total THC | 35.91 | 359.10 |
| Calculated CBD Yield | 0.00 | 0.00 |

Calculated Total THC = Delta-9-THC + 0.877 * THCA

Calculated Maximum CBD Yield = CBD + 0.877 * CBDA

Marin Analytics, LLC

250 Bel Marin Keys Blvd, Suite D4

Novato, CA 94949

833-321-TEST / info@marinanalytics.com

Mike Clemmons
Lab Manager

This sample has been tested by Marin Analytics, LLC using valid testing methodologies and a quality system. Values reported relate only to the sample tested. Marin Analytics, LLC makes no claims as to the efficacy, safety, or other risks associated with any detected or non-detected levels of any compounds reported herein. This Certificate shall not be reproduced except in full without the written approval of Marin Analytics, LLC. Copyright 2023 Marin Analytics, LLC All Rights Reserved.